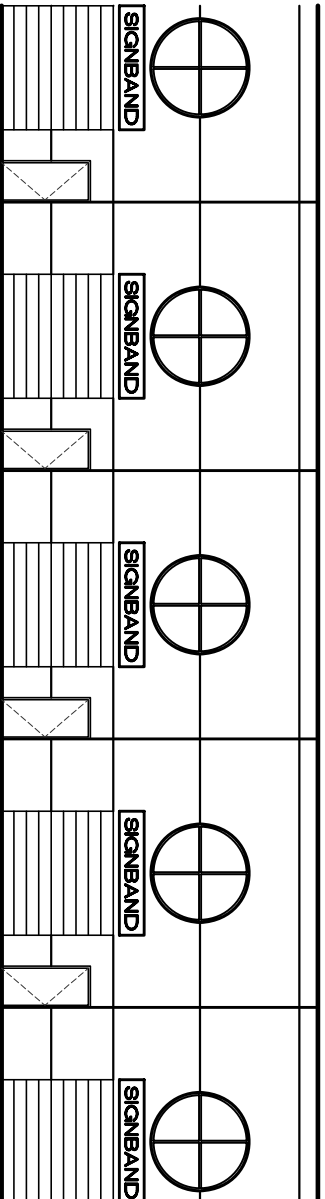


401 INDUSTRIAL AVE.
VANCOUVER, B.C.
MARPOLE INVESTMENTS LTD.
604-733-2723

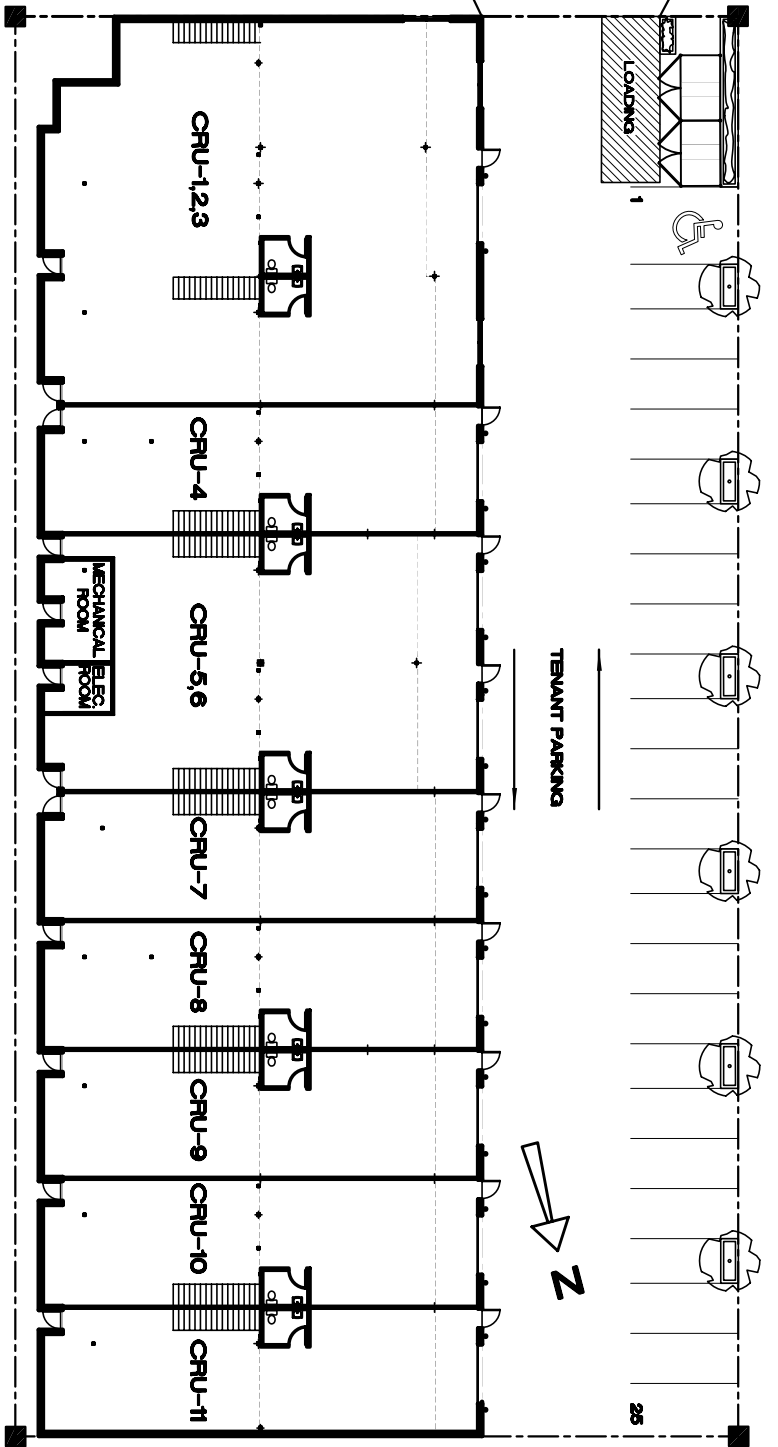
FRONT ELEVATION
N.T.S.



401 INDUSTRIAL AVE.
 VANCOUVER, B.C.
 MARPOLE INVESTMENTS LTD.
 604-733-2723

FRONT ELEVATION - DETAIL
 N.T.S.

INDUSTRIAL AVE.

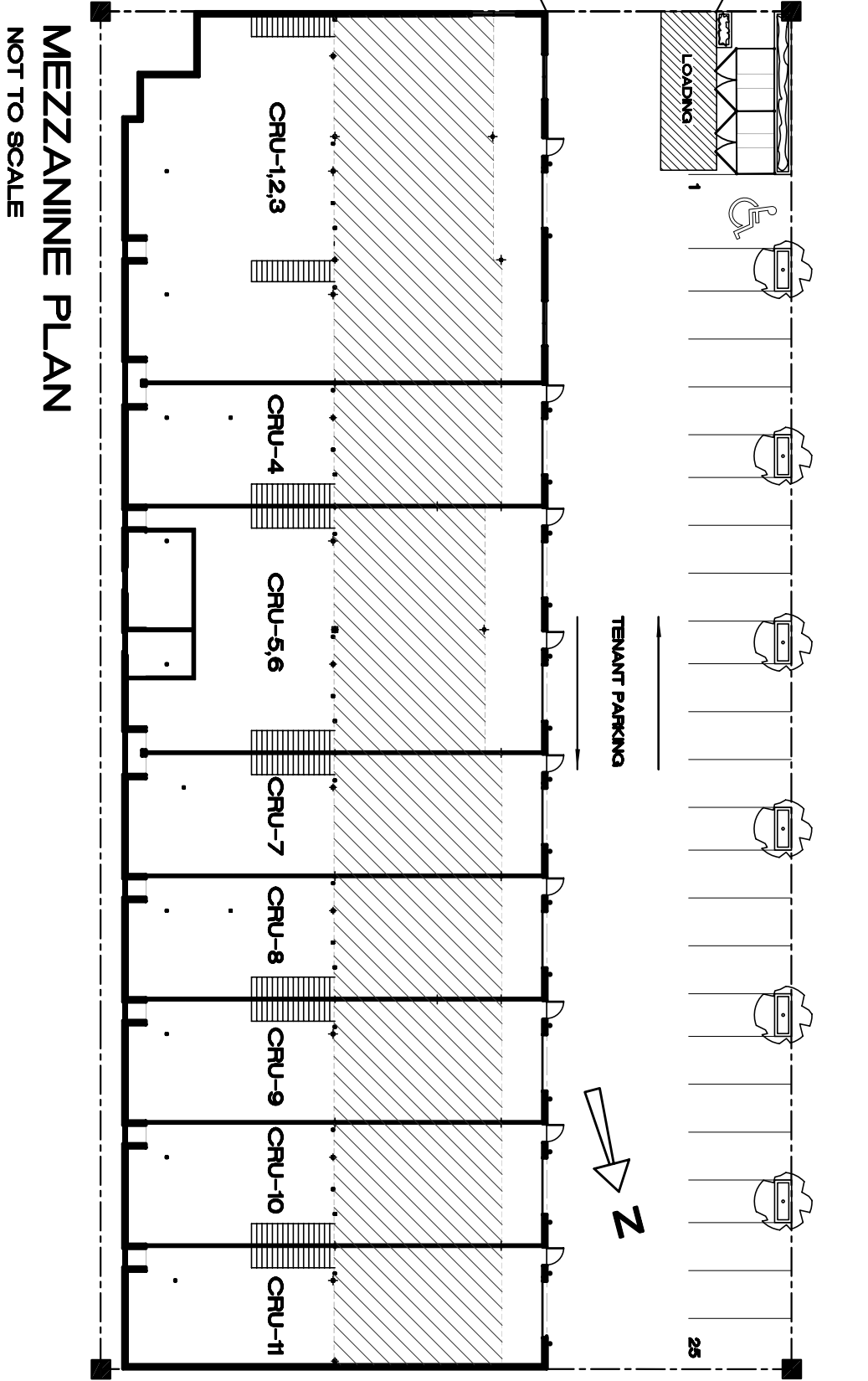


UNITS AND PARKING
NOT TO SCALE

Multi-Tenant Industrial Building
VANCOUVER, B.C.
MARPOLE INVESTMENTS LTD.
604-733-2723

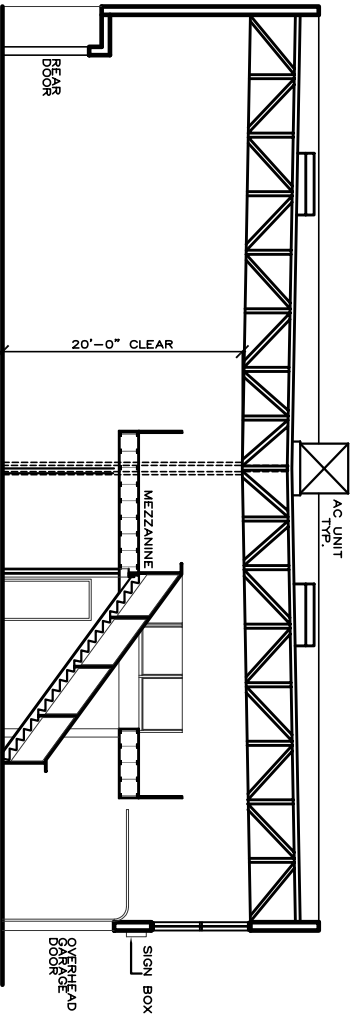
Units	Main Floor SF	Mezzanine SF	Total SF
1,2&3	4672.96	1864.06	6537.02
4	1602.43	642.45	2244.88
5&6	2877.22	1152.84	4030.06
7	1598.40	640.81	2239.21
8	1601.64	640.85	2242.49
9	1601.64	640.97	2242.61
10	1601.64	640.97	2242.61
11	1594.00	638.00	2232.00
	17149.93	6860.95	24010.88
Common Area			300.00
			24310.88

INDUSTRIAL AVE.



MEZZANINE PLAN
NOT TO SCALE

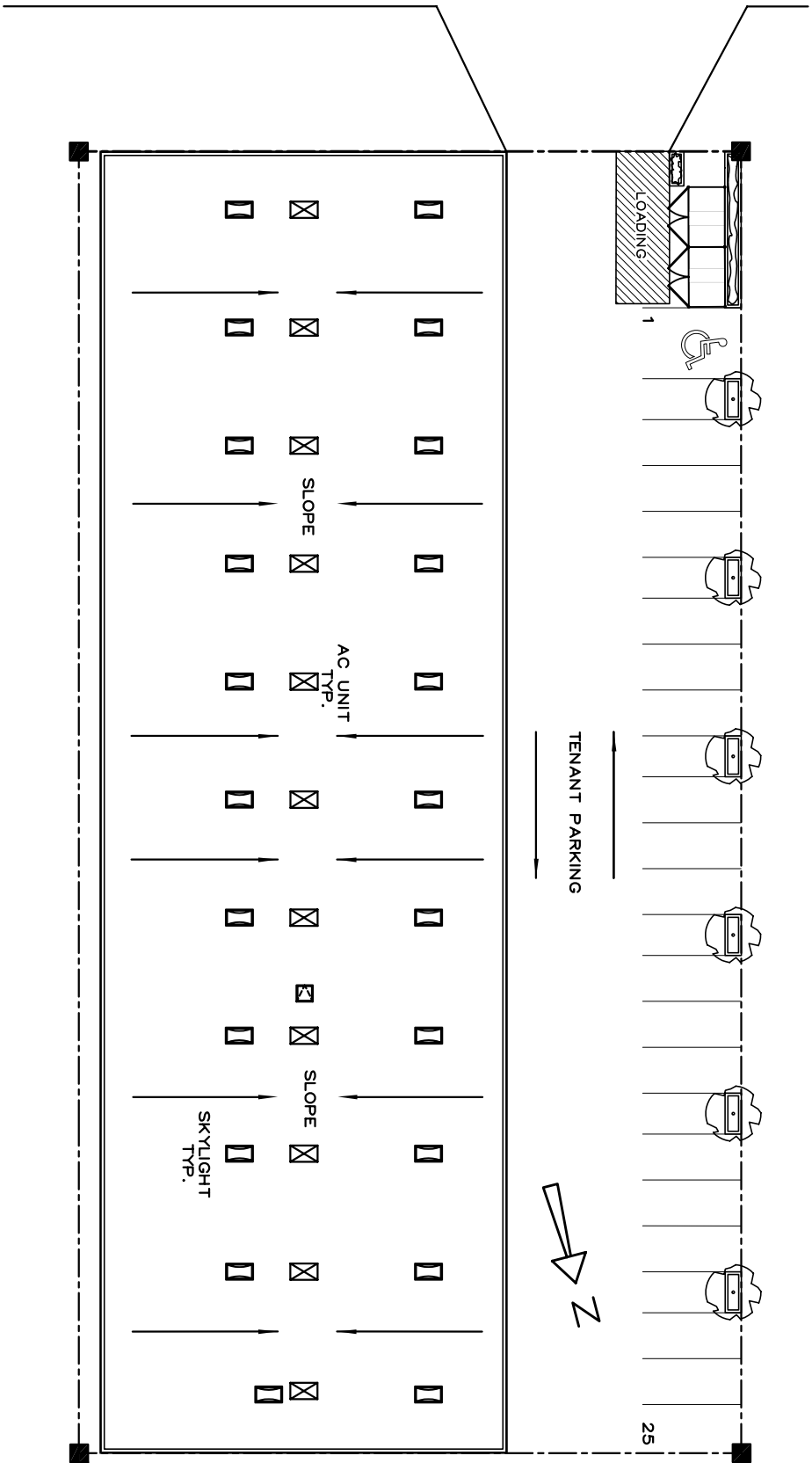
Multi-Tenant Industrial Building
VANCOUVER, B.C.
MARPOLE INVESTMENTS LTD.
604-733-2723



401 INDUSTRIAL AVE.
 VANCOUVER, B.C.
 MARPOLE INVESTMENTS LTD.
 604-733-2723

SECTION
 N.T.S.

INDUSTRIAL AVE.



401 INDUSTRIAL AVE.
VANCOUVER, B.C.
MARPOLE INVESTMENTS LTD.
604-733-2723

ROOF AND PARKING
N.T.S.